

SD44 Platte / Winner Bridge Environmental Assessment and Section 4(f) Evaluation

Public Open Houses - June 20 & 21, 2023

June 20: Winner Holiday Inn Express, 5:30-7:00pm

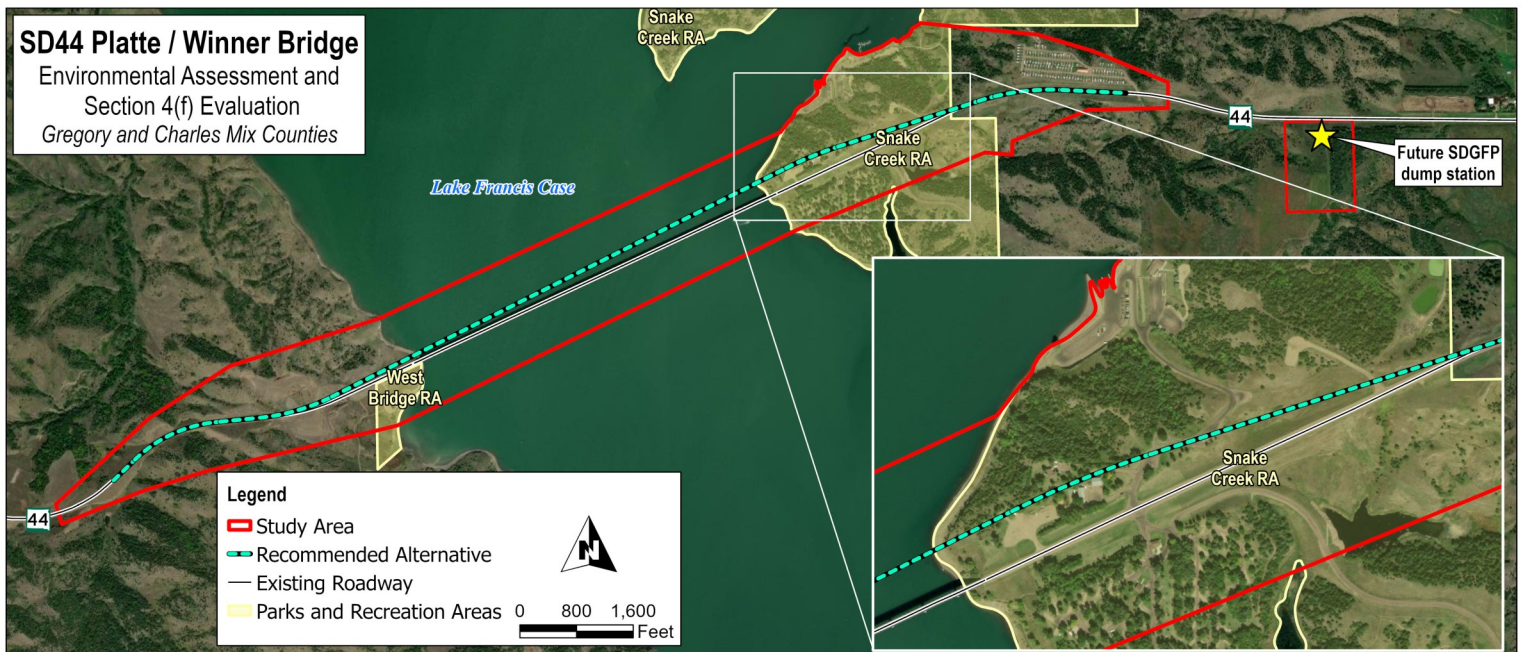
June 21: Platte Community Center, 5:30-7:00pm

Project Information and Meeting Objectives

Welcome to the third and final Public Open House of the SD44 / Platte-Winner Bridge Environmental Assessment and Section 4(f) Evaluation! This project is proposing a realignment of the South Dakota State Highway 44 (SD44) bridge over the Missouri River.

As part of this multi-year project the Environmental Assessment (EA) is a comprehensive review of resources and impacts that may occur as part of the bridge replacement of SD44. Due to the presence of recreational and historic resources, an additional "Section 4(f)" evaluation is necessary. Several public agencies, including the South Dakota Game, Fish and Parks Department, have been involved in development of the project. Now is the formal opportunity for public comments on the project.

The EA and Section 4(f) evaluation along with all accompanying appendices can be found online at sd44bridge.com. **The public comment period is open from June 1, 2023 through July 7, 2023.** Comments will be reviewed and addressed as part of the determination of significance to be complete during the summer of 2023. Assuming a "Finding of No Significant Impact" determination is made, the first signs of construction may be visible in Snake Creek Recreation Area as soon as this fall. Major construction elements on the bridge or highway are expected to start in 2025.



SD44 Platte / Winner Bridge Environmental Assessment and Section 4(f) Evaluation

Comment Period - June 1, 2023 to July 7, 2023

Frequently Asked Questions

Will the existing bridge remain open during construction?

Yes! The current bridge will not be demolished until after completion of the new structure and traffic is officially moved to the new bridge alignment. That said, we do anticipate some minor disturbances to mobility through this area during construction. For example construction activity may cause situations of a lane closure with alternating one-way traffic, or short periods of stopped traffic to accommodate construction equipment movement. These disturbances are expected to be temporary in nature and timed to minimize disruption.

What is the anticipated construction schedule? And will the old bridge remain?

The first stage of construction could begin as soon as this fall, that work would be related to planned improvements at Snake Creek Recreation Area (see below). Construction on the bridge and Highway 44 is planned to begin in late 2024 or early 2025. Two years of construction are anticipated, with opening of the new bridge to traffic occurring in 2027. After construction is complete, the old bridge will be removed from the river, with no structural elements visible above the water.

How will Snake Creek Recreation Area be impacted?

Improvements are planned to help keep the park fully operational during all phases of construction. This means some work at the park will occur as soon as this fall to prepare for construction. One of the notable improvements will be relocation of the dump station to a new site 1.25 miles east of the current site. Access to the boat launch and parking lot is expected to remain in place during construction, with some potential temporary impacts. We do not expect direct impacts to the campgrounds south of Highway 44. Indirect impacts (such as noise during work hours set by the contractor) are expected - more details about those potential impacts will be better understood when a contractor is chosen.

How wide will the new bridge be?

The new bridge roadway will be eight feet wider than the old bridge. Two twelve-foot lanes will remain in place, but now the shoulders will be six feet wide instead of two feet.

What will happen to the old bridge?

The existing bridge will be demolished and removed from the river after completion of the new bridge and highway. No elements of the old bridge will be visible from above the water.

How can I view the EA and related documents?

All documentation for the project is available at the project website www.sd44bridge.com. You can also scan the QR code on this page to access the documents page directly.

Project Contacts

Tim Thoreen, PMP
Consultant Project Manager
HR Green
651-659-7777
tthoreen@hrgreen.com

Steve Gramm, PE
SDDOT Project Manager
SDDOT
605-773-3281
steve.gramm@state.sd.us

Project Website
www.sd44bridge.com



Visit the project website for more information and project updates.